

ARCHI[®]

MEDICAL SOLUTIONS



PRECISION MANUFACTURING FOR **MEDICAL OEMS**

PRECISION IN THE HANDS OF SPECIALISTS

We are collaborative partners for design development and prototype-to-production expertise. We meet the most demanding tolerances, complex geometries, and highest standards of quality and delivery. Our technical staff provides value-added engineering support to complement our validated manufacturing processes.

FACILITIES:

- State-of-the-art technologies
- 560,000+ square feet of manufacturing space
- ISO 13485 certified
- FDA registered

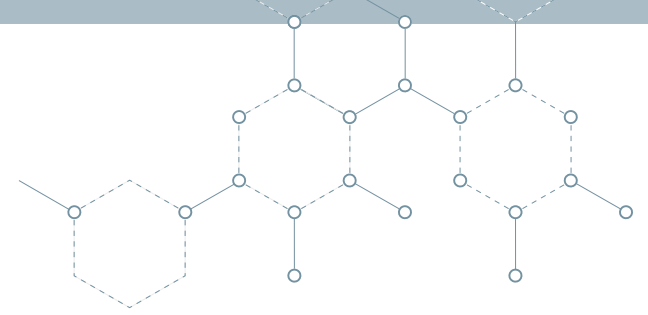
END-TO-END SUPPORT:

- Engineering and design assist
- Hard metals, aluminums, plastics, exotic metals
- Precision milling and turning
- Finishing and assembly services
- Supply chain integration

EXPERTISE:

- Orthopedic implants
- Spinal and surgical instruments
- Surgical robotics components
- End effectors
- Navigated tools
- Components, devices, subassemblies
- Dental implants and instruments





MARKETS SERVED



ORTHOPEDICS

IMPLANTS, INSTRUMENTS, CUTTING TOOLS

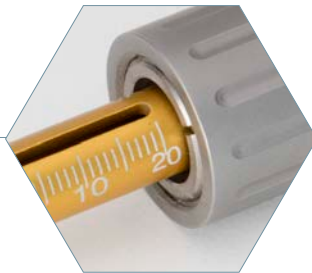
Contributing to breakthroughs in implants and instruments that enable surgeons to improve the quality of life for ailing patients.



SURGICAL ROBOTICS

COMPONENTS, END EFFECTORS, PRECISION GEARS

Tight-tolerance gears, components, subassemblies, and end effectors for surgical robotic systems and robotic-assisted devices.



LIFE SCIENCES

COMPONENTS, DEVICES, SUBASSEMBLIES

Elevating medical devices, machines, and testing equipment with precision machining, manufacturing, and assembly services.



DENTAL

IMPLANTS, TOOLS, INSTRUMENTS

Precision micro-manufacturing of dental implants, tools, and instruments with deep expertise in a wide range of alloys.

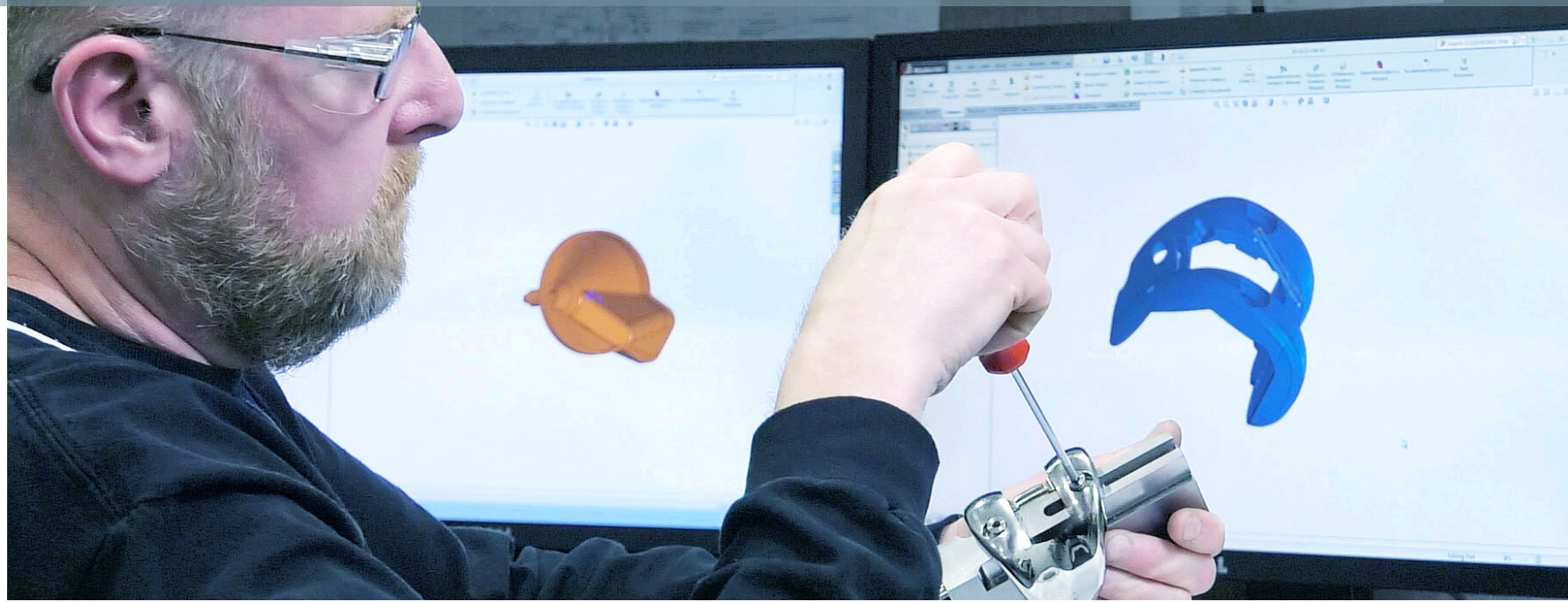
SOLUTIONS FROM START TO FINISH

CUTTING-EDGE CAPABILITIES, SERVICE, AND SUPPORT

Our teams collaborate with yours to provide a complete and scalable range of resources that answer the need for precision-manufacturing expertise, production capacity, finishing services, and related supply chain integration. We offer support that results in component cost reductions, performance improvements, and distinct competitive advantages. We quickly turn around make-to-order and specialty instruments with lead times measured in days, not weeks or months.

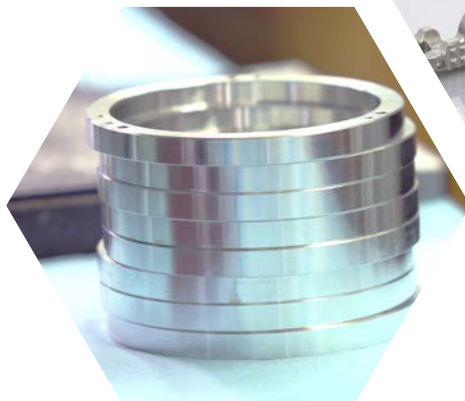
As experienced contract manufacturers with the latest precision machining and manufacturing capabilities, we play our part to help medical OEMs make the technological breakthroughs behind modern medical procedures that improve—and save—lives worldwide.





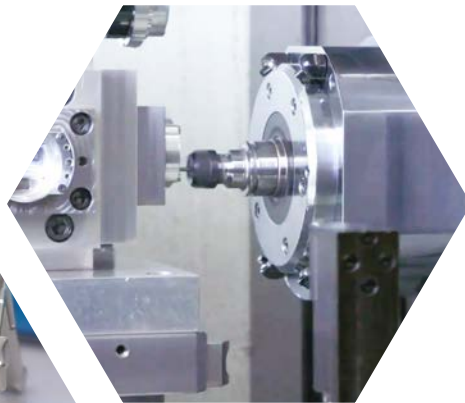
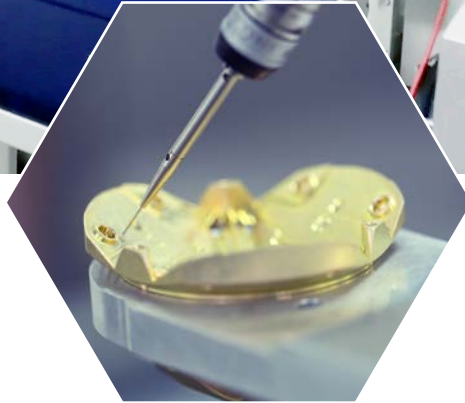
ENGINEERING DESIGN

- Design for manufacturability
- Modeling and prototyping of parts and assemblies
- CNC simulation for collaboration and verification
- Over-tolerance cost avoidance
- Design cycle compression



ACHIEVE OPTIMAL SOLUTIONS

Our engineers embrace your project challenges, working diligently to overcome them in a way that serves your needs and meets your objectives. Our team looks beyond the simple or obvious to uncover and implement the best solution for your part and your business. Working together with your team, we find answers that reduce component costs, improve performance, provide competitive advantages, and create innovative, life-changing products.



MATERIALS EXPERTISE

- Specialty and exotic metals
- Castings and forgings
- Plastics and non-metals
- Aluminum, stainless, titanium, high-nickel alloys
- Engineered polymers

PRECISION ACROSS THE SPECTRUM

We confidently work with plastics, alloys, and exotic metals to precision manufacture orthopedic, spinal, and dental implants and instruments, navigated and surgical robotic components, medical devices, and testing equipment. Our teams and facilities use the latest technologies and high-tech equipment to manufacture complex, precision-machined components in the full range of medical-grade materials.

PRECISION MACHINING

SWISS MULTI-AXIS TURNING

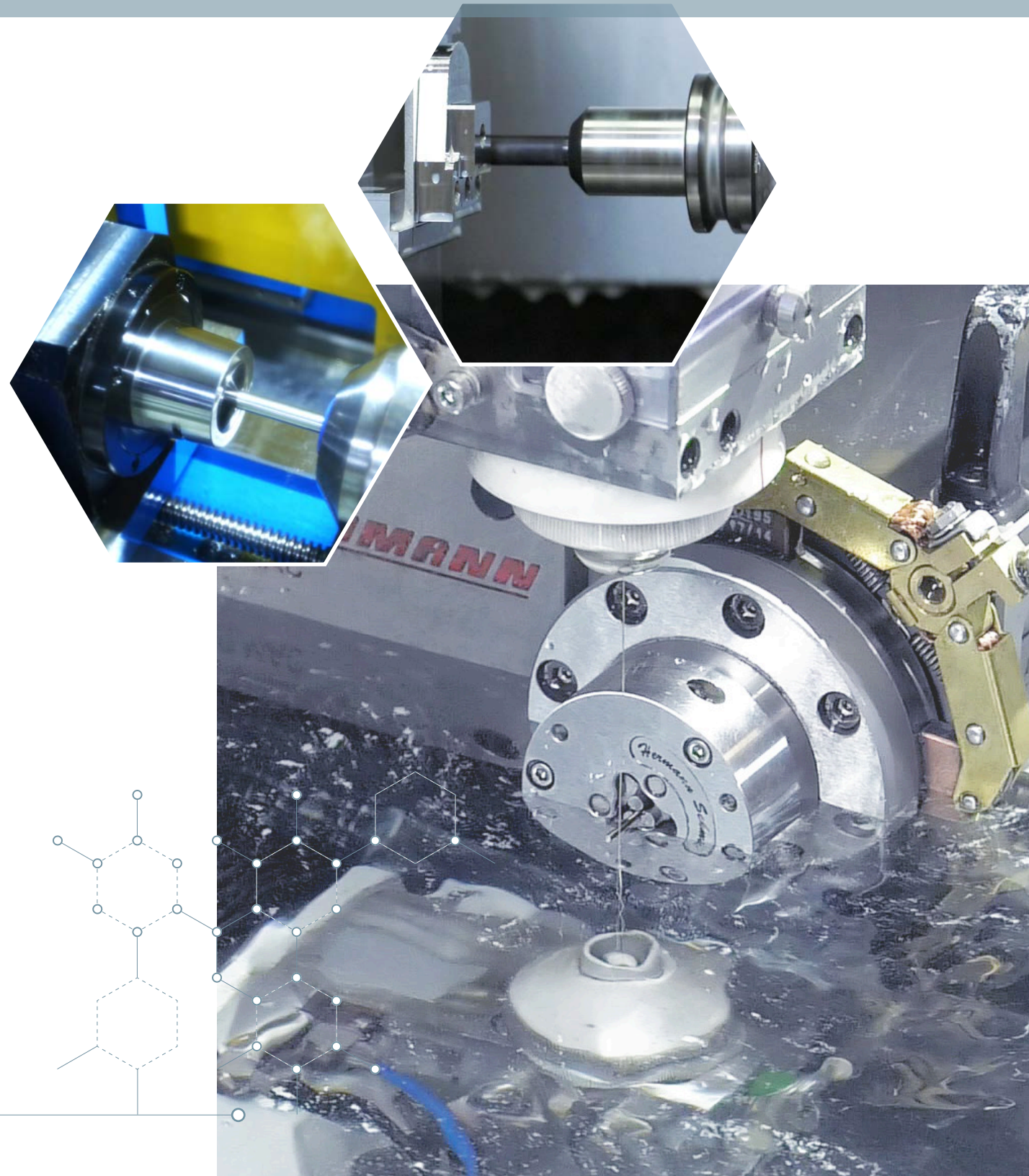
Among our state-of-the-art equipment is a vast array of Swiss multi-axis turning machines that enable us to accurately machine medical components to micrometer precision. These cutting-edge machines turn parts using a fast-rotating lathe that shaves down metal to specific sizes.

5-AXIS MILLING CAPABILITIES

Our high-speed 5-axis milling and multi-axis turning capabilities enable us to manufacture intricate components in a single setup. This is possible because multi-axis machines can move a part or a tool on different axes simultaneously. In addition, this multi-direction ability allows the tool to smoothly follow a contoured surface.

ELECTRO-DISCHARGE MACHINING (EDM)

We are heavily invested in state-of-the-art EDM machining equipment to ensure implants, instruments, and components are manufactured to the highest levels of precision. Using EDM high-precision technology, we can achieve micro-intricacies with tight tolerances on the most challenging of medical-grade materials and the most complex of shapes.



FINISHING SERVICES

COMPREHENSIVE SERVICES TO HELP YOU SUCCEED

Our complete solution for you includes extensive value-added and finishing services that complement our proven manufacturing processes. This broad range of services allows us to handle a project from conceptualization to full production and packaging under one roof. You no longer need to deal with multiple subcontractors and vendors. You can rely on us for one-stop, turnkey solutions from prototyping to delivery.

- Validated processes
- Cleaning and passivation
- Assembly and testing
- Laser marking
- Kitting and packaging



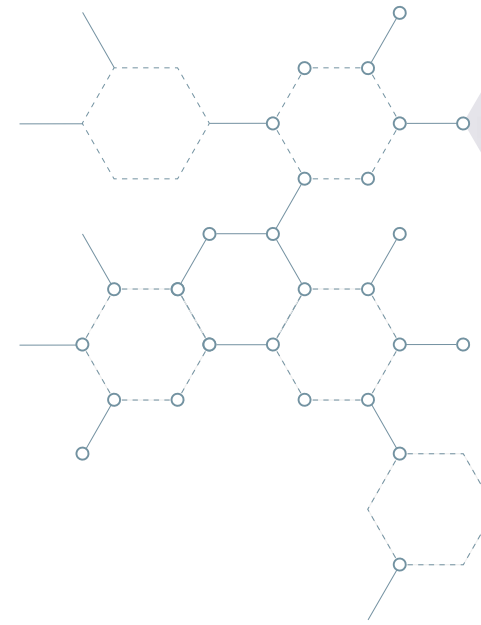


QUALITY ASSURANCE

MEETING YOUR EXACT SPECIFICATIONS

To ensure the quality of our medical devices, implants, and instruments, we conduct full-cycle inspection, with checks occurring before, during, and after manufacturing. We combine state-of-the-art metrology with stringent machining processes to provide our customers—and in turn their customers—the highest-quality medical parts and components.

- QMS, ISO 13485 medical, ISO 9001
- Mil-Spec, ASTM, ANSI, and SAE standards
- Gage tracking and calibration software
- Optical measurement systems
- Digital profilometers and comparators



TRANSITION SOURCING, SUPPLY CHAIN

ENSURING A SMOOTH OUTSOURCING PROCESS

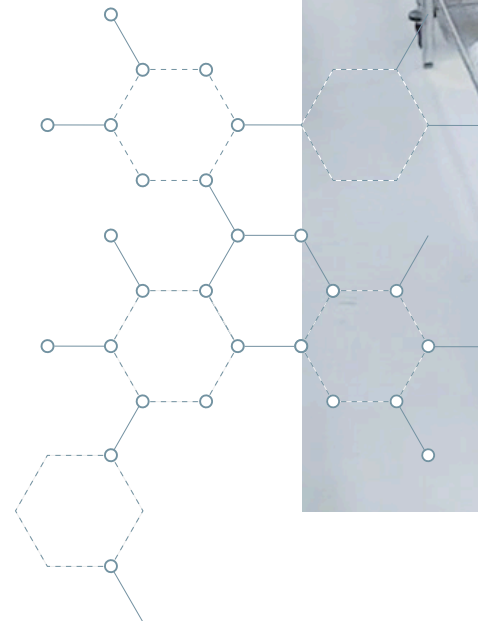
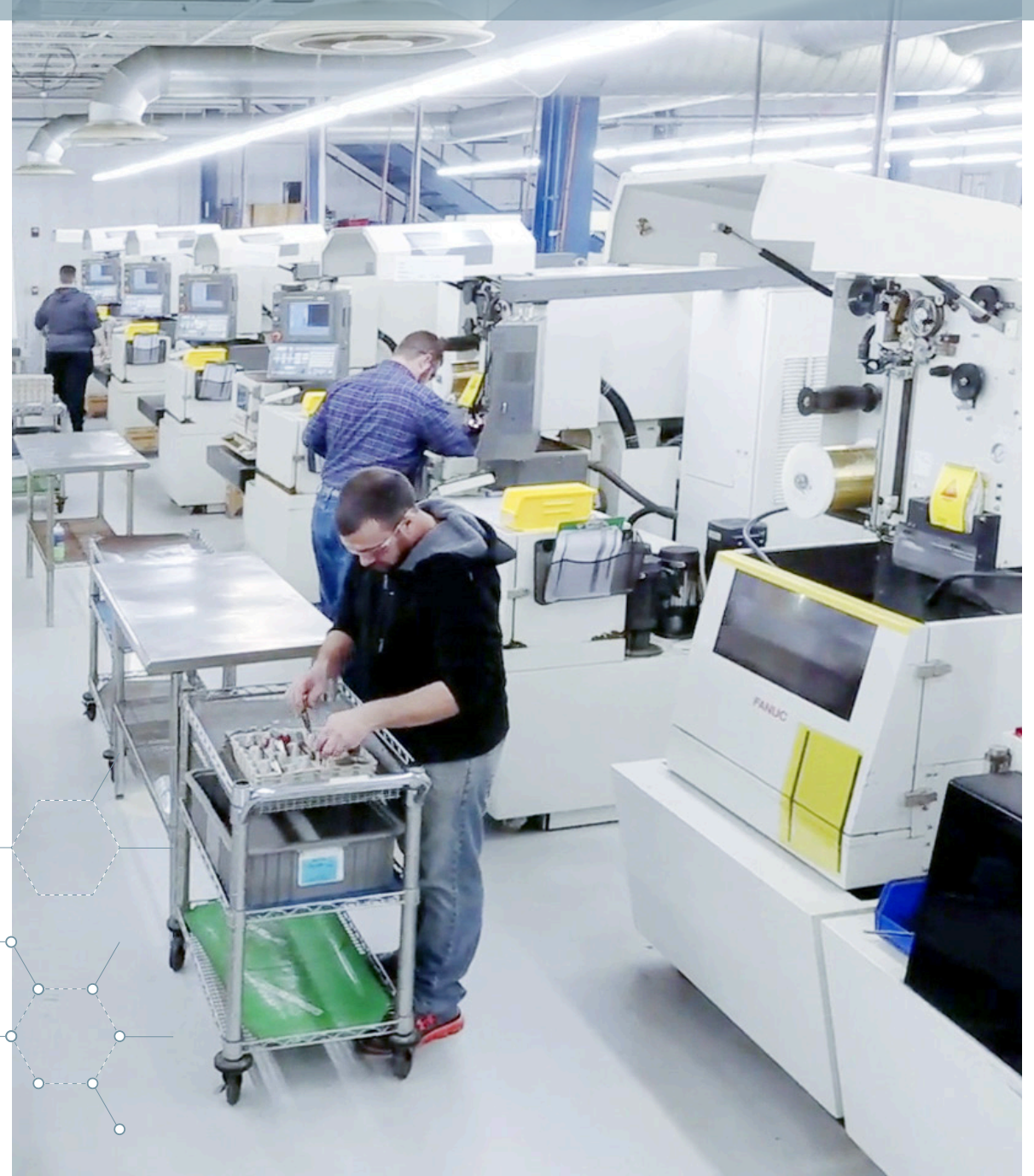
Transitioning your precision machining and assembly operations to a contract manufacturer is an important part of a medical OEM's evolution. Our proven, unique approach streamlines the process, ensures success, minimizes risk, and allows customers to focus on growing their business instead of spending capital on equipment.

ENHANCE THE VALUE OF YOUR SOLUTION

At facilities nationwide, we are equipped to provide Advanced Supply Chain Management services, including raw materials, and parts cleaning, identification, kitting, and packaging needs. Our experienced team helps engineer the complete design, manufacturing, and assembly of market-ready products with shortened timelines, lower total cost of production, and related supply chain integration.

- Integrated parts supply for one-source simplicity
- Kanban dock-to-stock and just-in-time shipping
- Parts and assembly packaging direct to production
- Subassemblies including inspection and certification
- Variable count stocking flexibility
- Vendor managed inventories

ARCH FACILITY	FDA REGISTRATION NUMBER
Bartlett	3009973505
Blandon	3007925235
Elkhart	3009923627
Escondido	2029005
Lexington	3016438694
Minneapolis	2133778
Olive Branch	3010123206
Philadelphia	3006791286
Quakertown	2531477
Seabrook	1221763
Sparta	3010041662



○ Improving people's lives ... we have a part in that

