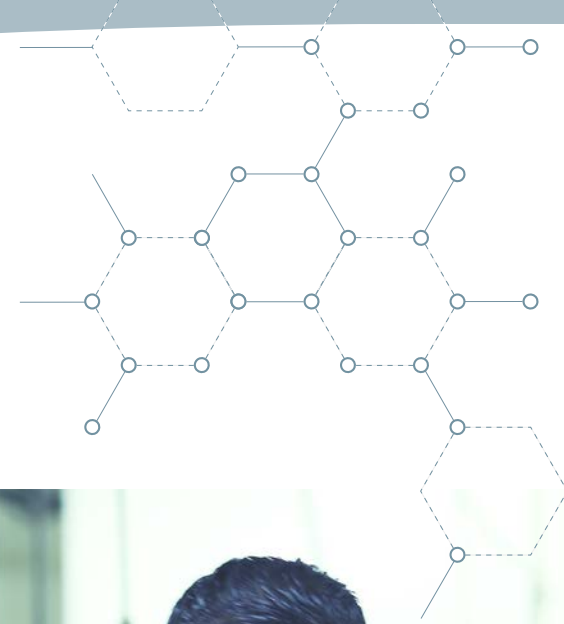


PRECISION MANUFACTURING FOR **SURGICAL ROBOTICS**

YOUR **TRUSTED** PARTNER

At ARCH, we strive to exceed your expectations in every way. Our simple measure of a job well done is this: If our customers are successful, we have fulfilled our promise. With our teams collaborating with yours every step of the way, you have a partner truly invested in your success. You can rely on us for one-stop, turnkey solutions for complex machining and component assembly.



SURGICAL ROBOTICS

COMPONENTS, END EFFECTORS, PRECISION GEARS

Cutting-edge expertise in the precision machining and manufacturing of components and subassemblies for leading OEMs of robotic-assisted surgical equipment and systems.



○ Improving people's lives ... we have a part in that



UNMATCHED EXPERTISE

MANUFACTURING FOR SURGICAL ROBOTICS

Robotic-assisted surgery is at the vanguard of rapid technological advancements in the medical industry. Only the most incredibly precise and reliable components are suitable for these applications that make differences in people's lives. ARCH Medical Solutions components and subassemblies enable the enhanced precision and control of robotic systems, giving surgeons the means to perform delicate and complex procedures that are often difficult or even impossible using traditional methods.

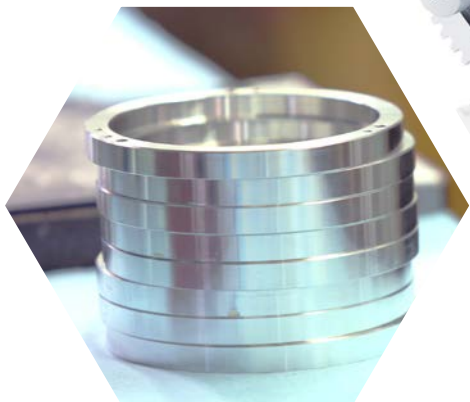
- ISO 13485 certification
- Components and assemblies
- Aluminum, stainless, plastics, high-nickel alloys
- Implants, instruments, devices
- Prototyping and MTO
- Validated processes





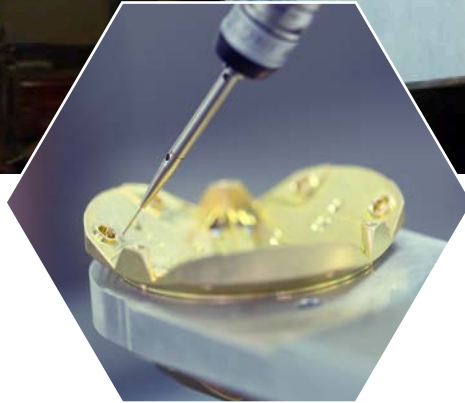
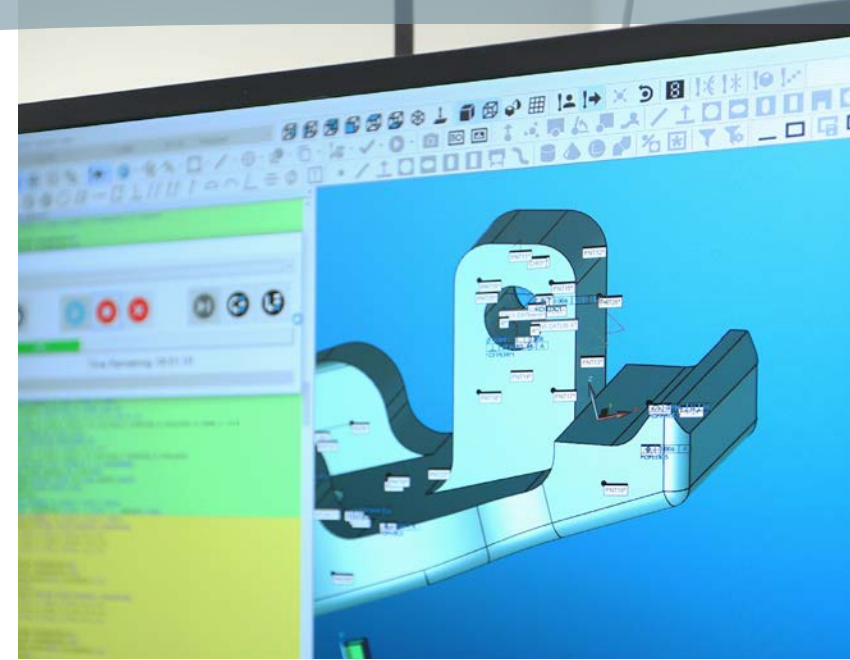
ACCURACY IN MOTION

- Robotic components for medical applications
- Precision gear cutting to within .0001"
- End effectors and navigated instruments
- Aluminum, stainless, plastics, high-nickel alloys



PRECISE GEARS THAT MOVE AN INDUSTRY

The uncompromisingly accurate movements needed for successful robotic-assisted surgery depend on exact meshing of precision gears. Our state-of-the-art facilities and highly skilled teams manufacture custom-cut, tight-tolerance gears and critical components that meet the industry's demanding requirements. Ongoing investments in the latest precision gear-hobbing, shaping, and milling equipment ensure we are capable of machining a broad range of tooth forms.



PRODUCT DEVELOPMENT

- Manufacturing, programming, and quality engineering
- 3D rapid prototyping and 3D printing
- Design-for-manufacturability services
- CNC milling, turning, RAM EDM, EDM drilling
- Wide variety of materials, including exotics
- Certified passivation, heat treating, and finishing
- Linear and radial laser marking
- ISO 13485, ISO 9001, TS-16949, and FDA-approved

CUSTOM PROTOTYPING TO YOUR SPECIFICATIONS

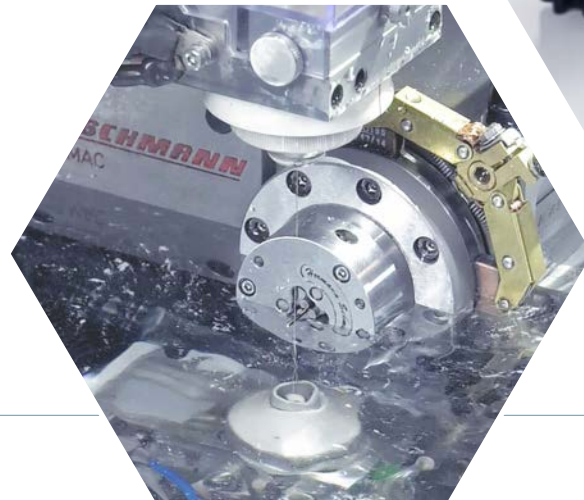
We specialize in providing fully functional, production-quality prototype parts ideal for form studies, fit-checks, and proof-of-concept testing. Our prototypes are machined to your specifications. We produce robotic gears and parts as large as 6 inches in length, 18 inches in width, 40 inches in height, and 23 inches in diameter using almost any type of metal, exotic alloy, or engineered polymer.

EXPERIENCE EXCELLENCE

HIGH-PRECISION MACHINING AND MANUFACTURING

To fulfill our commitment to high-quality, tight-tolerance parts, ARCH Medical Solutions uses lean principles in ISO facilities with cutting-edge machining centers. We design, engineer, and manufacture our fixtures and tooling in-house. We are skilled in the machining of aluminum, plastics, alloys, and exotic metals. Our customers experience exceptional quality and repeatability

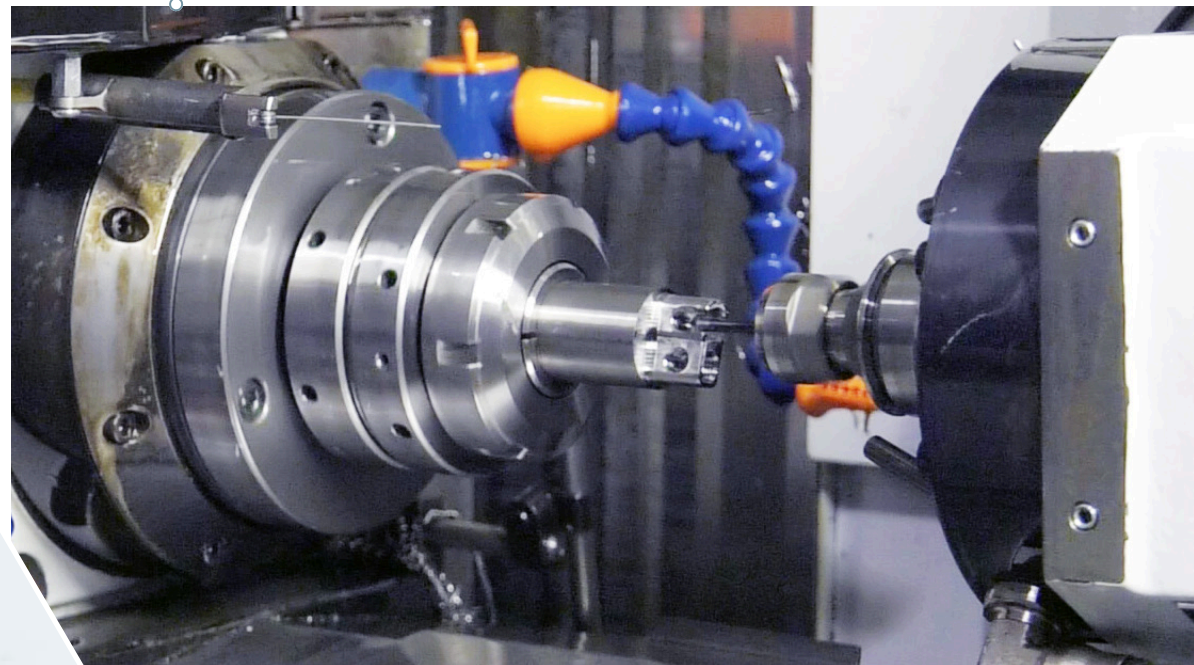
Investments in the latest CNC and inspection equipment ensure our high-quality parts and components are manufactured to your specifications. Our cutting-edge CNC manufacturing capabilities allow us to successfully and accurately produce complex precision-machined components and deliver them on time.

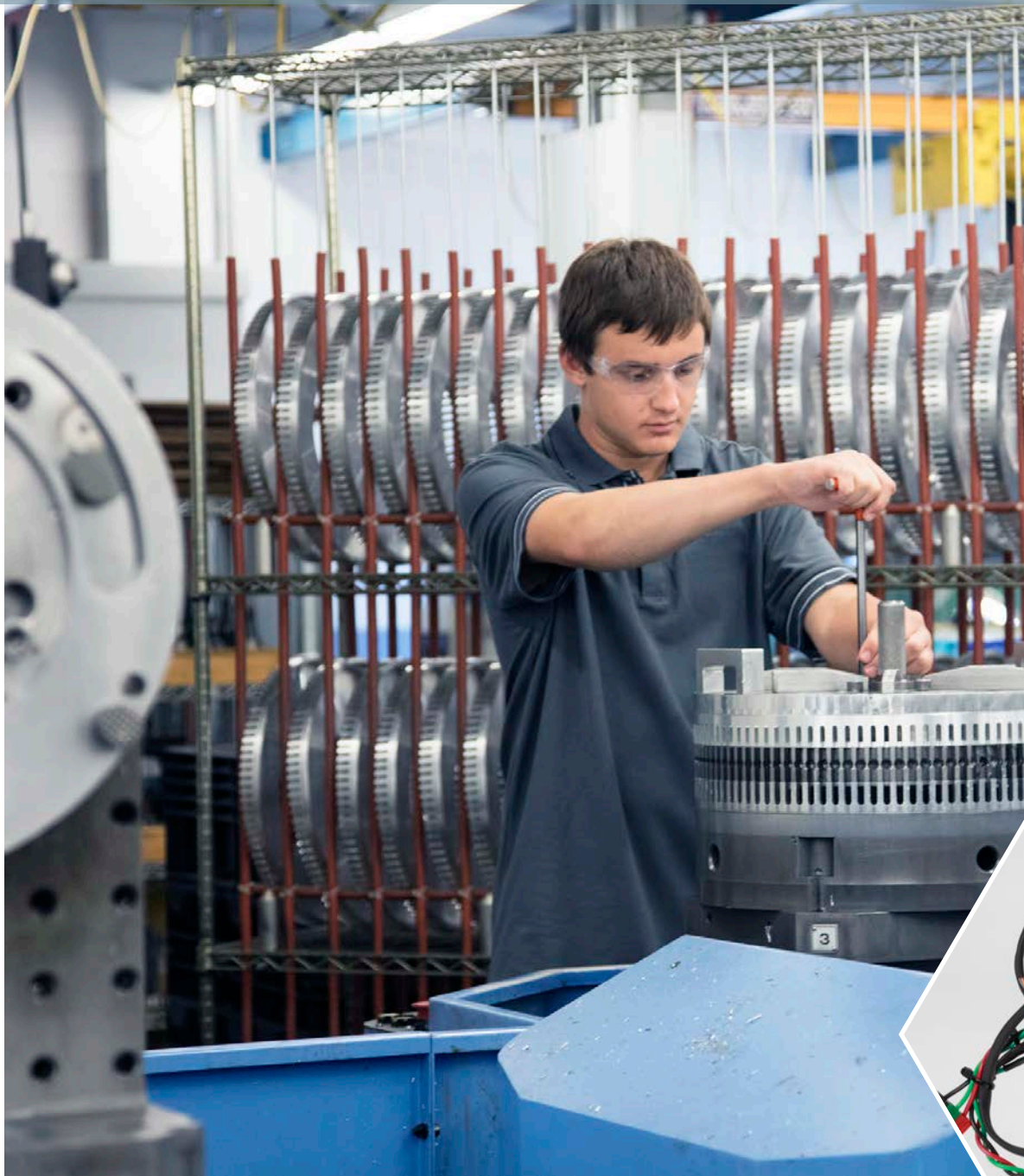


CUTTING-EDGE PERFORMANCE

HIGH-SPEED, MULTI-AXIS MILLING AND TURNING

Investments in a variety of CNC machines and technologies elevate our ability to manufacture precision components. With our 5-axis high-speed milling and Swiss multi-axis turning capabilities, we manufacture intricate and complex-geometry components in a single setup, accurately machining to measurements of micrometer precision.

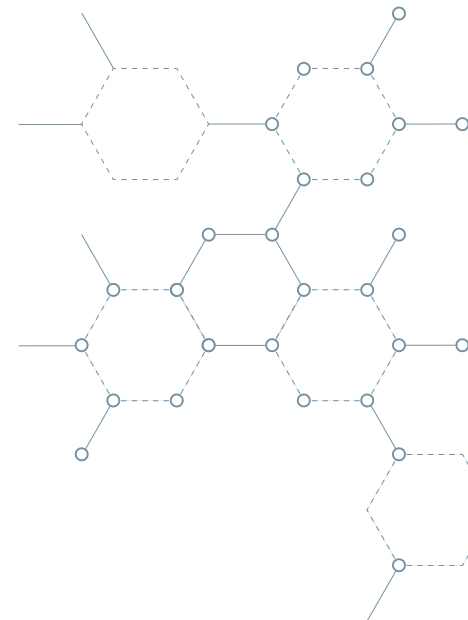


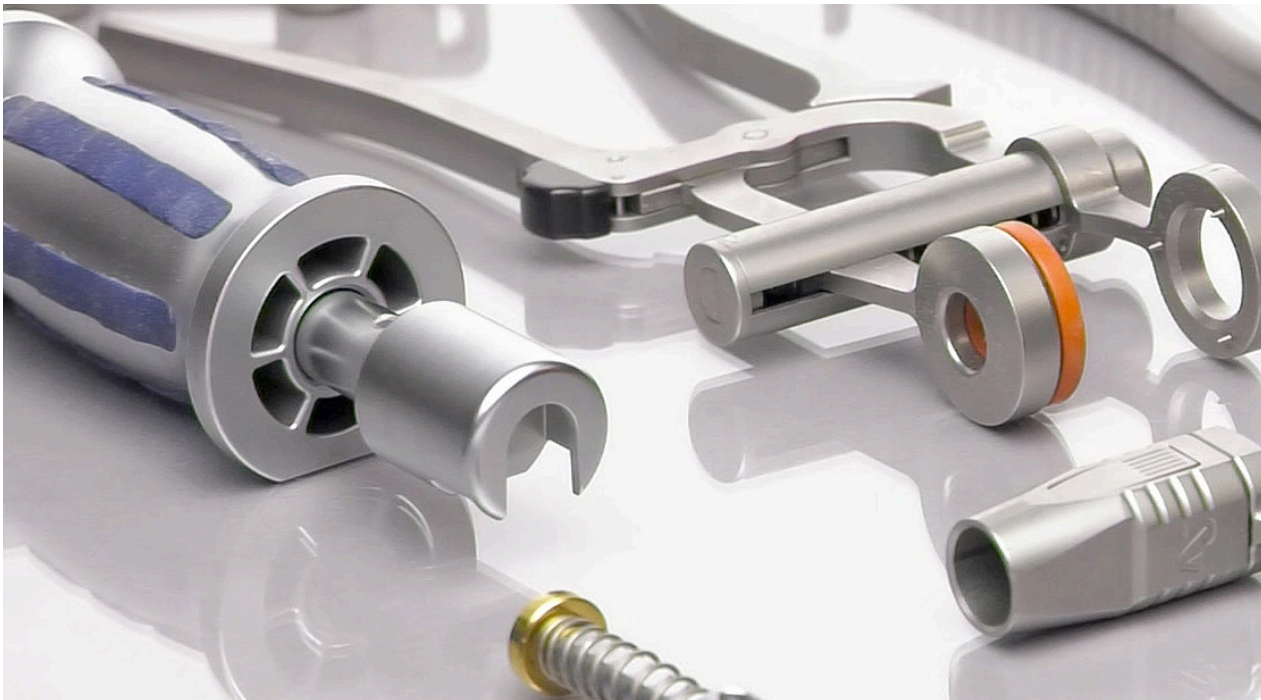
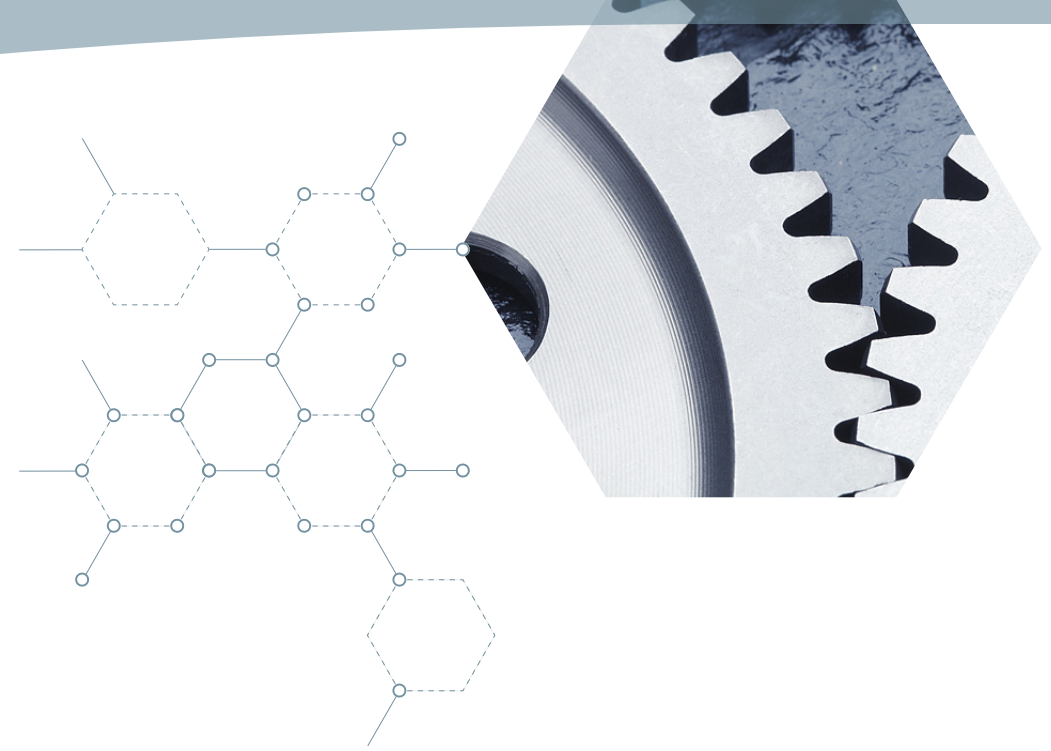


CUSTOMIZED ASSEMBLY SERVICES

VALUE-ADDED ATTENTION TO DETAILS

We offer an all-encompassing range of assembly services that includes mechanical fastening, adhesive options, and testing. Our metal-joining methods include dip-brazing, laser, and ultrasonic welding for assembling an array of complex products. We also offer services such as ultrasonic cleaning, bead blasting, laser marking, kitting, packaging, and more. We'll accommodate short-run orders as your demand increases or expand to full production.





END-TO-END SOLUTIONS

SURGICAL INSTRUMENT MANUFACTURING EXPERTISE

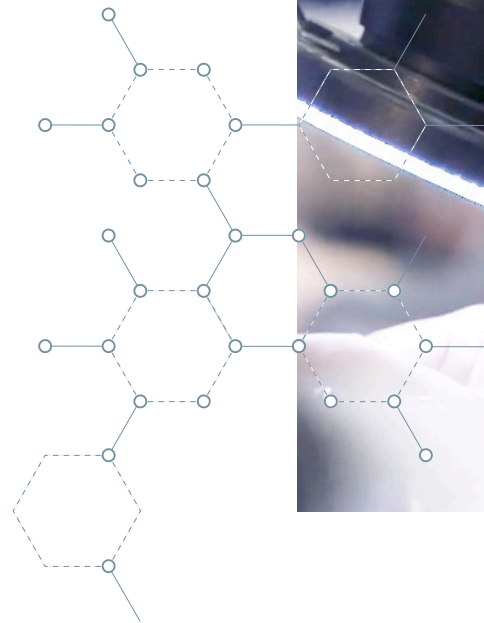
Beyond custom robotic components, ARCH Medical Solutions is proficient in producing surgical instruments specifically for robotic systems and navigated surgical applications. In multiple FDA-approved facilities across the country, we manufacture a mix of surgical instruments, implants, and medical devices for industry-leading orthopedic and medical device companies.

SUPPLY CHAIN VERTICAL INTEGRATION

Thanks to the nationwide ARCH Medical Solutions network, our contract manufacturing supply chain is diverse, scalable, and reliable. Our teams possess vast and varied skills and experience in a diverse range of materials and alloys. We have a proven record of speeds and feeds across an array of technologies.

WELL-POSITIONED TO MEET YOUR NEEDS

With facilities nationwide and thousands of employees, we leverage combined resources to create greater cost efficiencies and performance outcomes for our robotics customers. We continually invest in the advancement of our people and our technologies, furthering our ability to work with a broad range of materials and processes.



○ Improving people's lives ... we have a part in that

